

GIS PROFILING EXPERIENCE

August 2021



Indigo | Energy
Quality Engineers, Quality Solutions



IDENTIFY SUITABLE AREAS FOR SOLAR



Indigo | Energy
Quality Engineers, Quality Solutions

- Close to transmission lines
- Outside of Unsuitable areas
 - Incorrect land use zoning
 - Protected areas
- Info for consideration:
 - Slope
 - Land ownership
 - Land soil capability classification
 - etc.



DATA SOURCING



Indigo | Energy
Quality Engineers, Quality Solutions

- Credible national and regional databases
- Transmission line maps, Protected Areas, Land use Zones, etc.
- Able to work with a variety of file types (kmz, DEMs, shp, etc.)



Australian Government

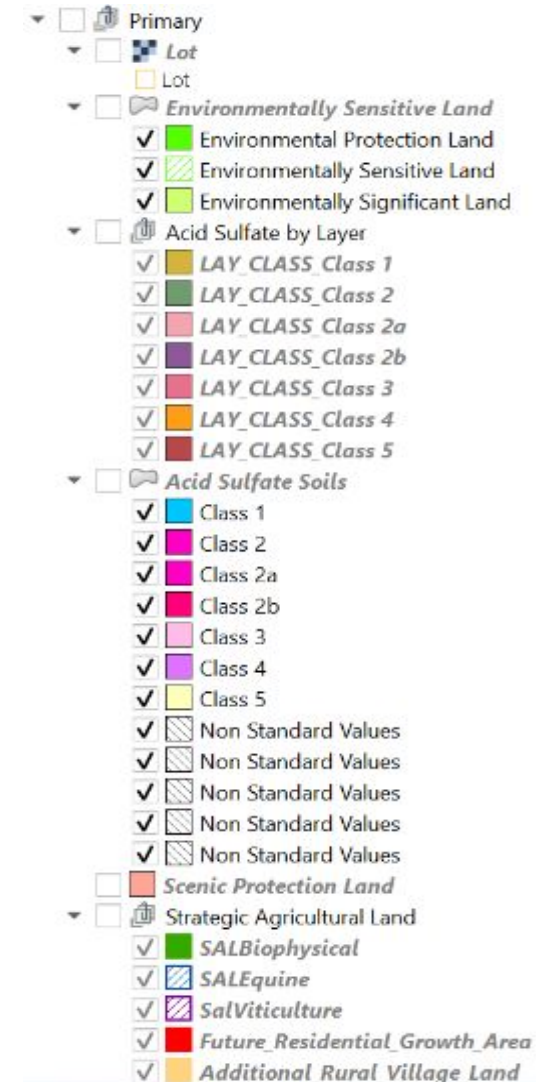


Spatial Services

DATA PROCESSING - WE MAKE THE DATA MAKE SENSE



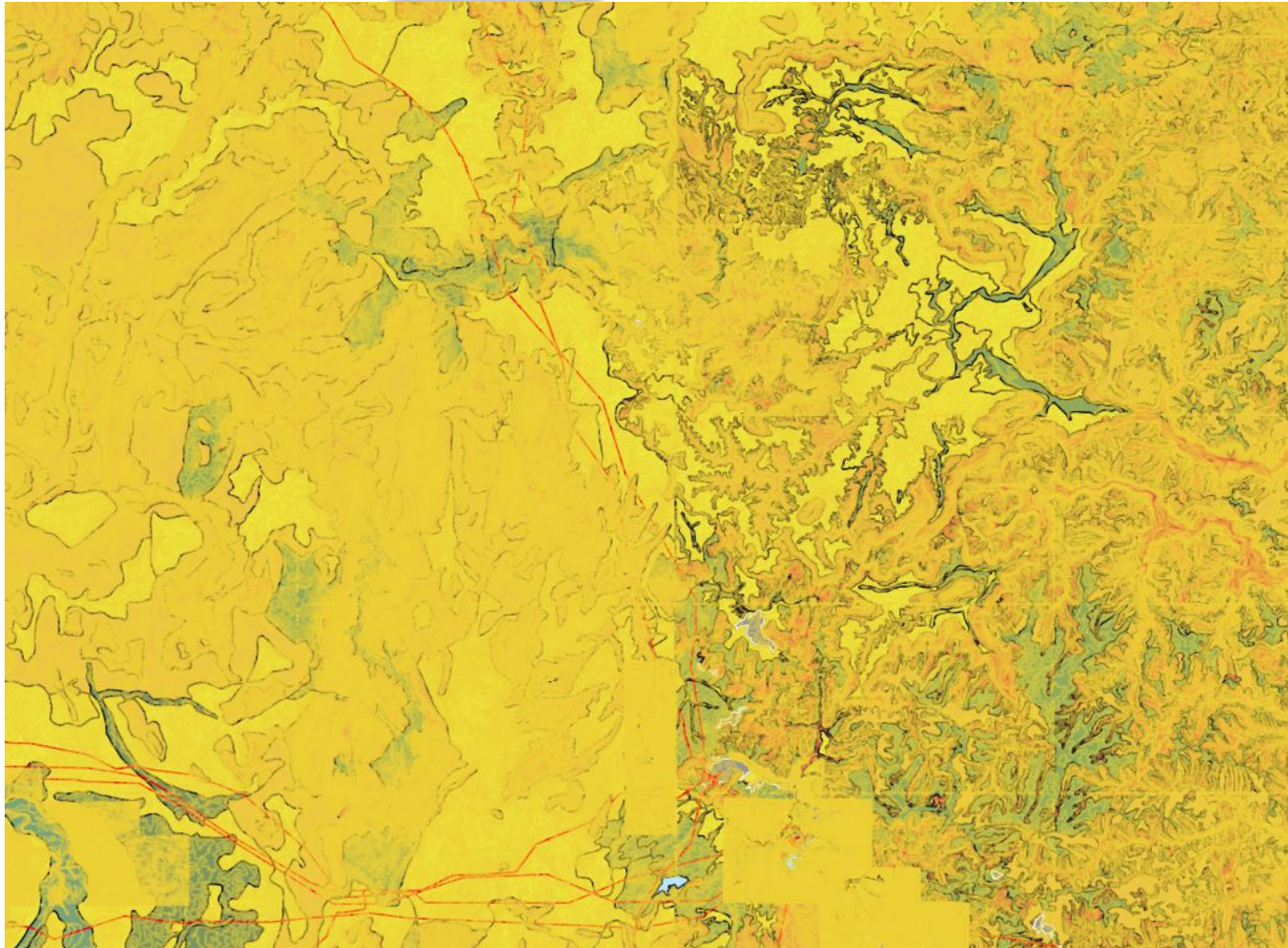
- Generate a 10 km boundary around the target transmission line
- Remove unsuitable areas using vector and raster processing tools
 - Clip
 - Intersect
 - Warp
 - Slope, etc.
- Optimize display for clarity
- Deliver
 - QGIS file for convenient data manipulation
 - Layout pdf for easier viewing



DATA PROCESSING - WE MAKE THE DATA MAKE SENSE

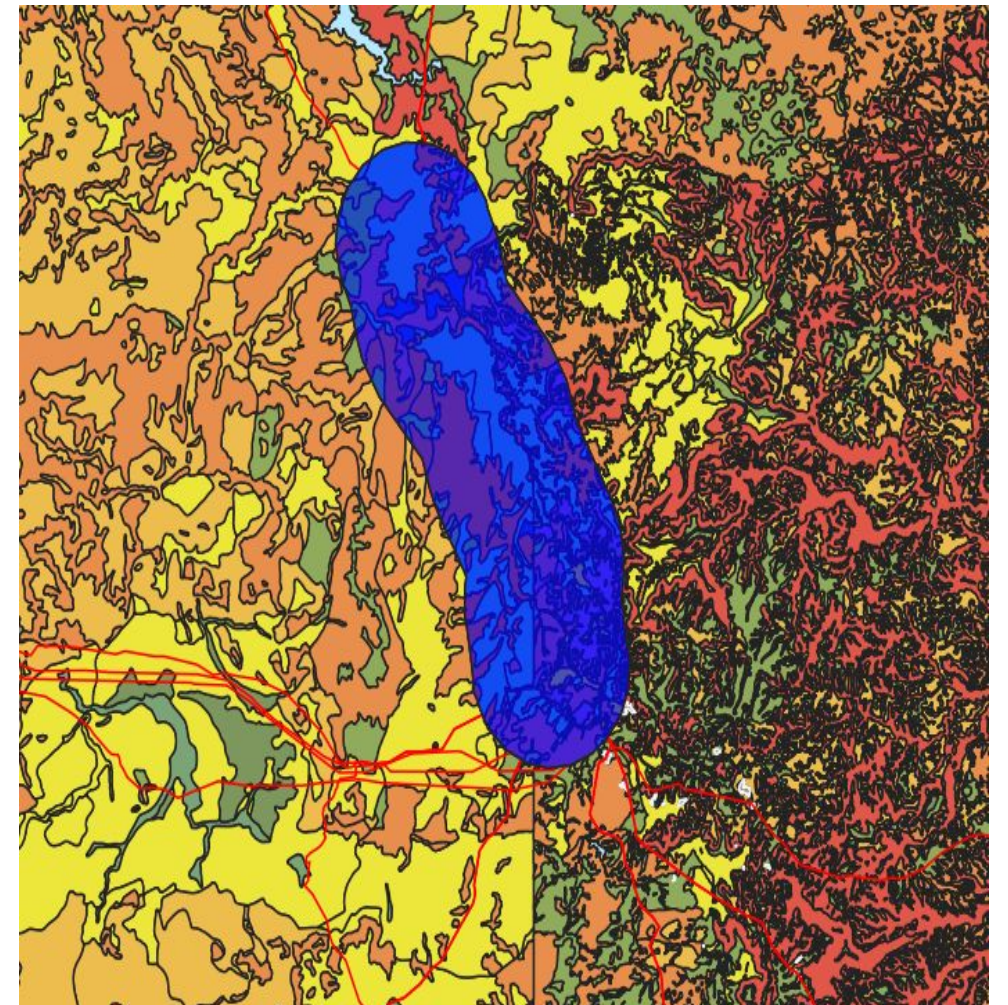


Indigo | Energy
Quality Engineers, Quality Solutions



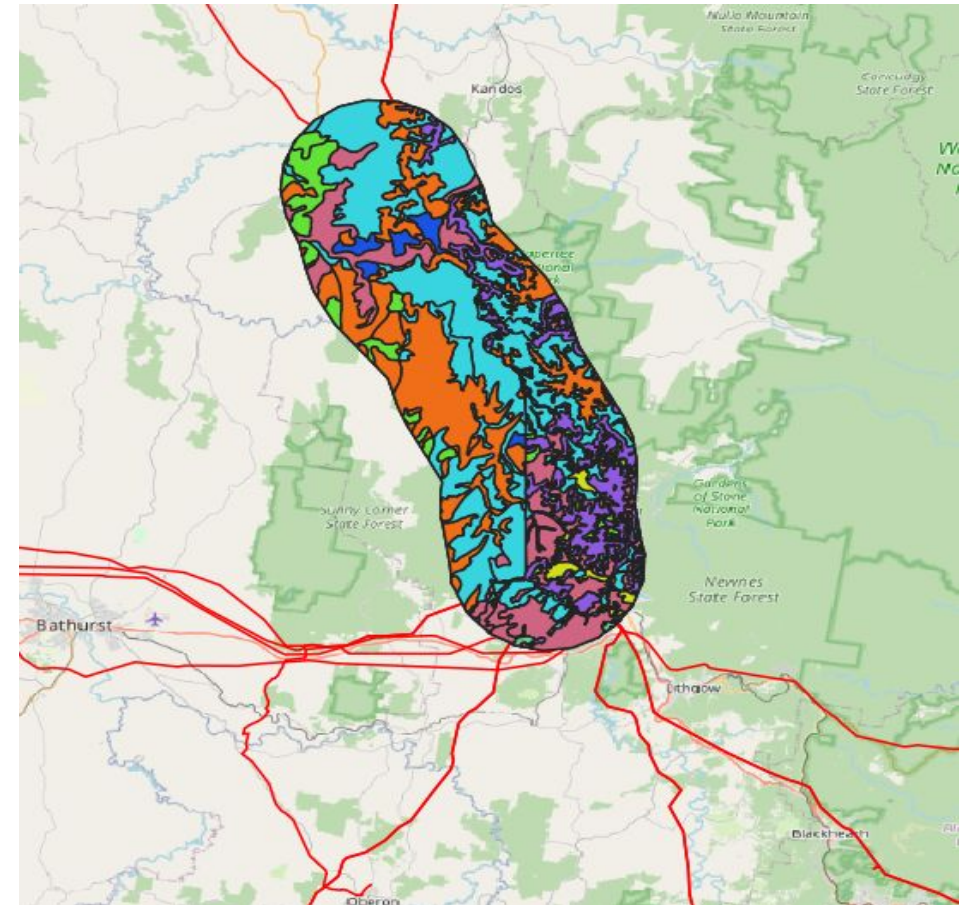
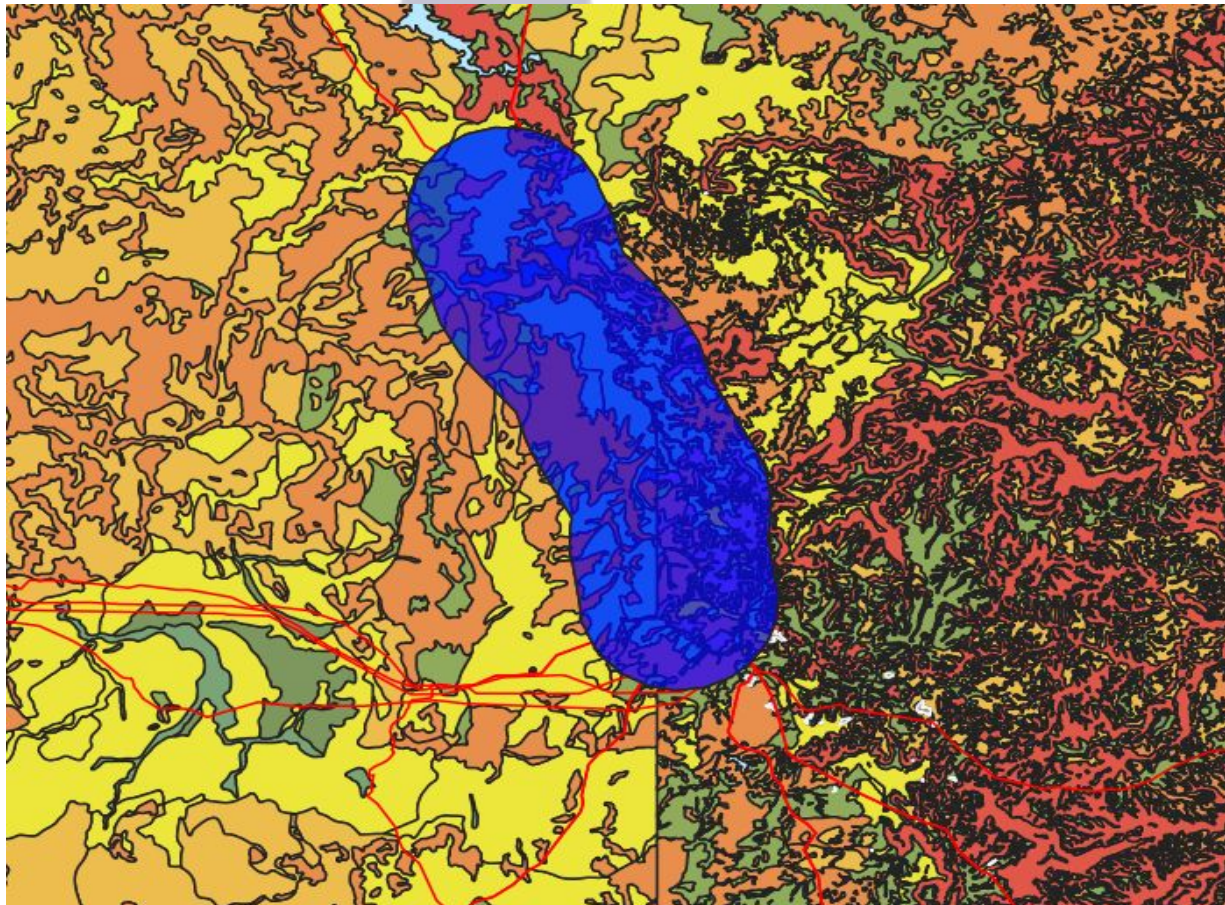
This image contains all the info needed, but not processed.

DATA PROCESSING - WE MAKE THE DATA MAKE SENSE



First, from all the transmissions lines in all of Australia, find the target segment and generate a 10km boundary.

DATA PROCESSING - WE MAKE THE DATA MAKE SENSE



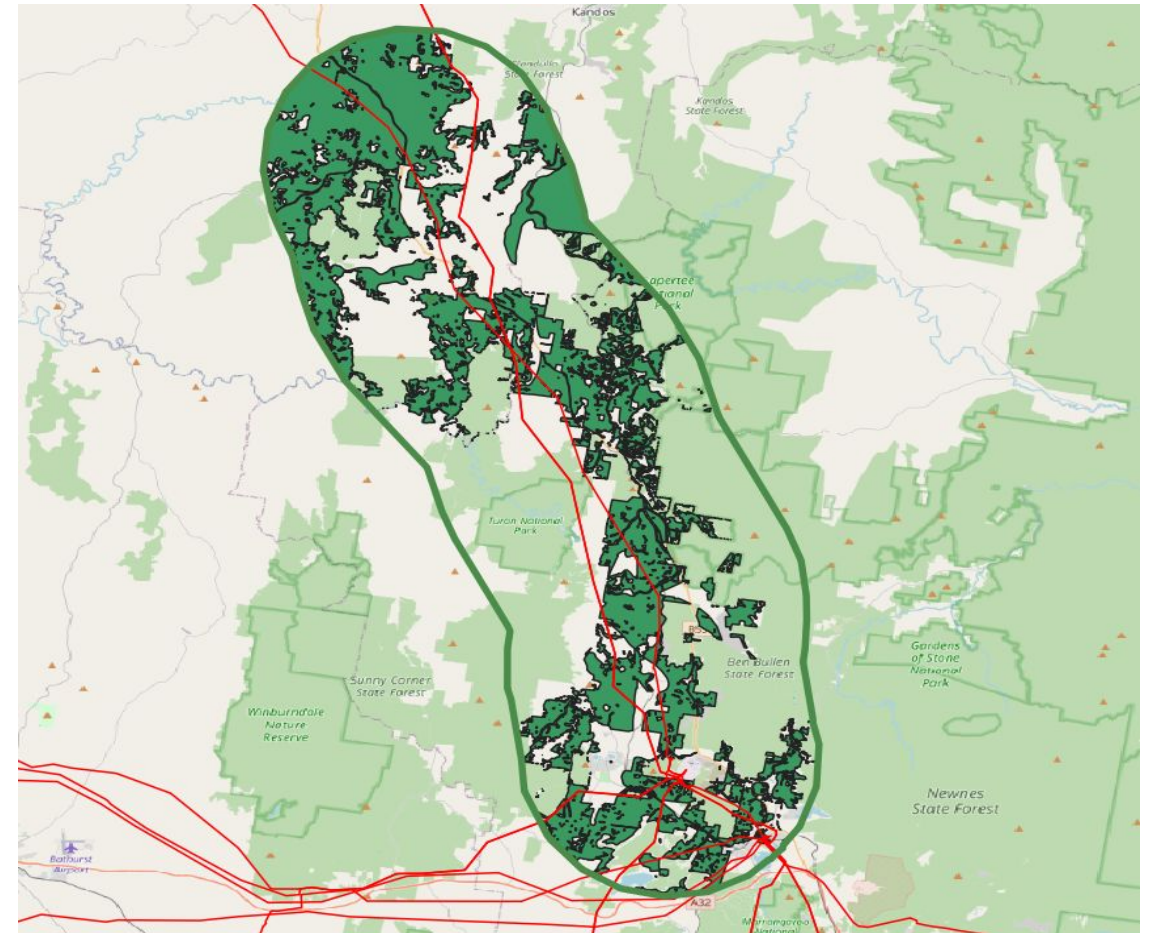
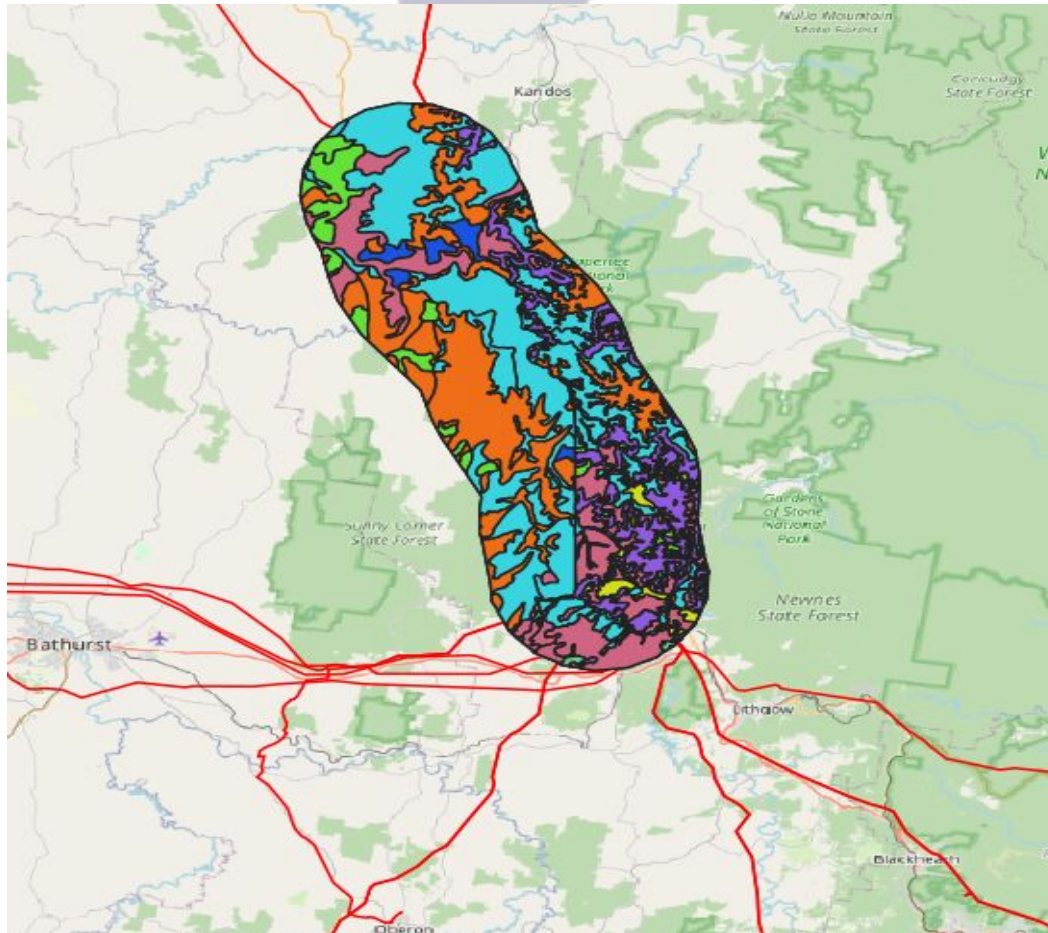
Next, trim* the extra information away.

*In actual processing, the trimmed area slightly exceeds the 10km boundary.

DATA PROCESSING - WE MAKE THE DATA MAKE SENSE



Indigo | Energy
Quality Engineers, Quality Solutions



Finally, use processing tools to chip away all the unneeded areas.



FURTHER TEAM QGIS EXPERIENCE

- Identifying eligible clients for a solar non-profit in California
- Processing Criteria:
 - Within a 1 hour drive distance
 - Low-income
 - Different thresholds for different programs
 - Ensure no overlaps in clients between offices
- Output - All eligible zip codes





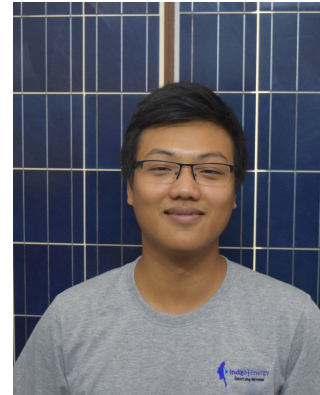
TEAM OVERVIEW

- Led by Allen Himes, an experienced engineer and entrepreneur
- Indigo Energy has a total team of around 15 renewable energy professionals, most of whom are engineers and all focused on producing high quality solar projects in a timely manner.
- The team has installed over 25 solar projects in Myanmar and has performed MWs of engineering services throughout Asia.



Allen Himes
Managing Director

- **Experience.** 10 Years of Renewables, 4 Years in Industrial Automation
- **Education.** B.S. Electrical Engineering; MBA, Babson College, USA
- **Languages.** English, French, Basic Burmese
- **Responsibilities.** Leading Overall Strategic Direction Including Project Development, Engineering, Operations
- **Interests.** Hiking, Aikido, Running



Robin Htun
Lead Solar Engineer

- **Experience.** 3+ Years in Solar Industry
- **Education.** Bachelor of General Engineering; Swarthmore College, USA
- **Languages.** Burmese, English, Japanese (~N3)
- **Responsibilities.** Designing Systems, Solving Challenging Problems, Health and Safety (HSE)
- **Interests.** Photography, Playing Board Games and Getting Lost in City, Nature, Paintings



May Yupar Myint
Project Manager

- **Experience.** 4 Years of Project Implementation in Solar Industry
- **Education.** B.E. Electronics; Technological University Taungoo, Myanmar
- **Languages.** Burmese, English
- **Responsibilities.** Managing Solar Projects, Managing Junior Engineers, Leading Design and Project Implementation Teams
- **Interests.** Swimming, Films